



Proposed Stop Amenities

- » Real-Time Information
- » Premium Shelter Package, including: shelter, bench, lighting, trash can
- » Off-Board Fare Payment
- » Near-Level Boarding



2035 Transit Travel Time Savings (min)

- » Total All Day (5)
- » AM Peak Period (1)
- » PM Peak Period (1)



Concept-Level Costs (2022 Dollars)

» Design & Other Professional Services	\$99,000
» Construction	\$543,000
» Right-of-Way & Utilities	\$15,000
» Total	\$657,000

State Street Improvements Operational Analysis Proposed Stop Concept Description

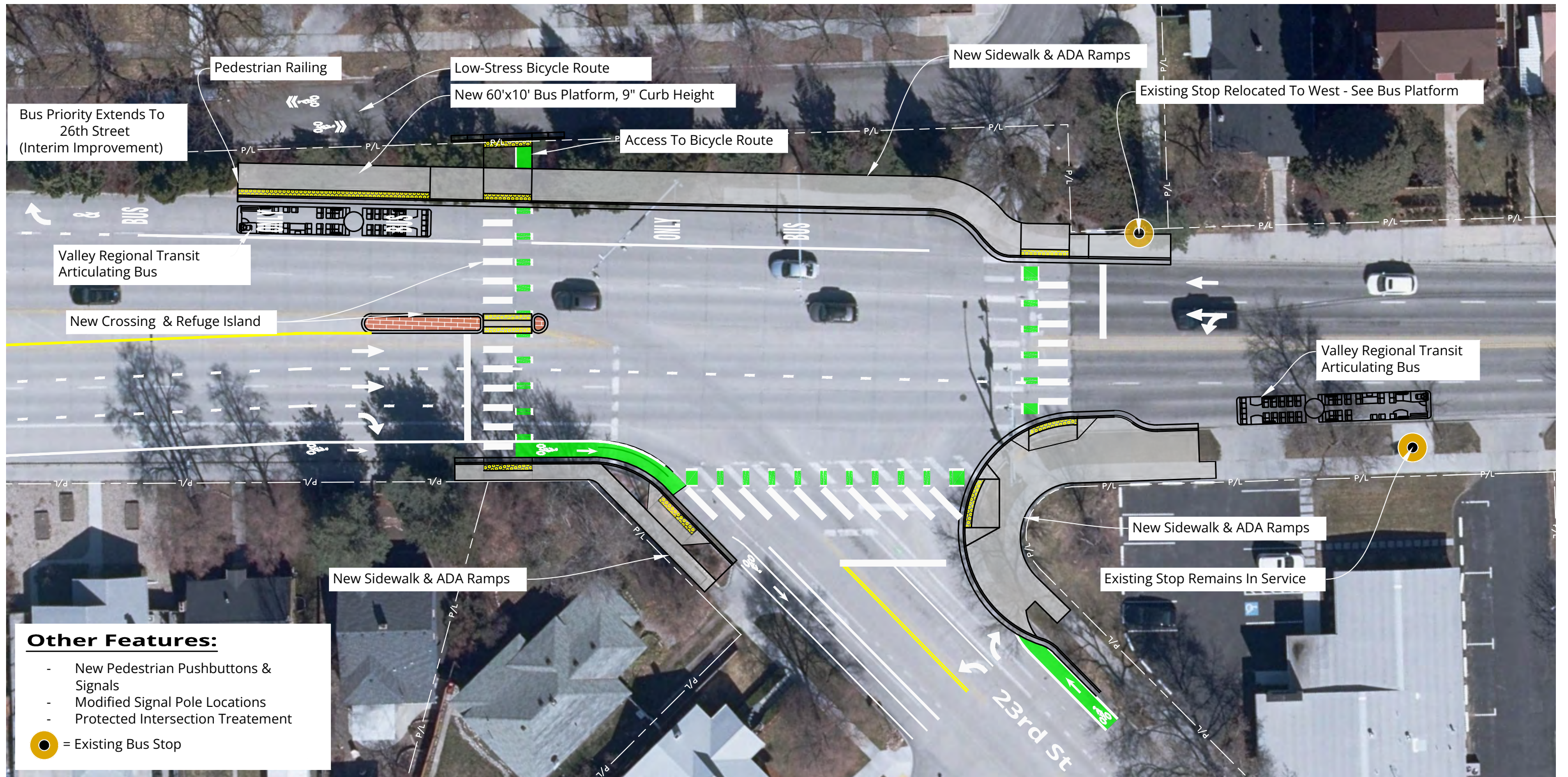
STATE STREET & 23RD STREET

Description

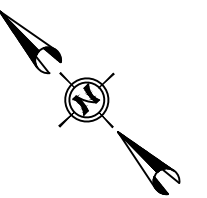
- » New far side near-level boarding platform for westbound buses
- » Right-turn lane, except buses, for both outbound and inbound directions
 - This is an interim improvement until the third vehicle lane on State Street is connected through the corridor
- » Bike lanes moved to multi-use pathways behind stop and through intersection
- » Bike crossing striping
- » Bulb outs for pedestrian/bike crossings
- » New west approach combined pedestrian/bike crossing with center crossing island and new pedestrian/bike signal head
- » Two new connections for pedestrians/bikes to low-stress bike boulevard on State Frontage Road from 23rd to 27th

2035 Multimodal LOS		Safety	
		2035 Crash Reduction (Per Year)	
Pedestrian	Bicycle	Total	Total (% Δ)
A (+2)	A (+2)	1.17	49%





Scale: 1" = 30'



**State Street Transit Operational Analysis (TOA)
State Street & 23rd Street
Proposed In-Bound/Out-Bound Improvements**

Conceptual - Not For Construction.



Proposed Stop Amenities

- » Real-Time Information
- » Premium Shelter Package, including: shelter, bench, lighting, trash can
- » Off-Board Fare Payment
- » Near-Level Boarding



2035 Transit Travel Time Savings (min)

- » Total All Day (8)
- » AM Peak Period (1)
- » PM Peak Period (3)



Concept-Level Costs (2022 Dollars)

» Design & Other Professional Services	\$49,000
» Construction	\$231,000
» Right-of-Way & Utilities	\$16,000
» Total	\$296,000

State Street Improvements Operational Analysis Proposed Stop Concept Description

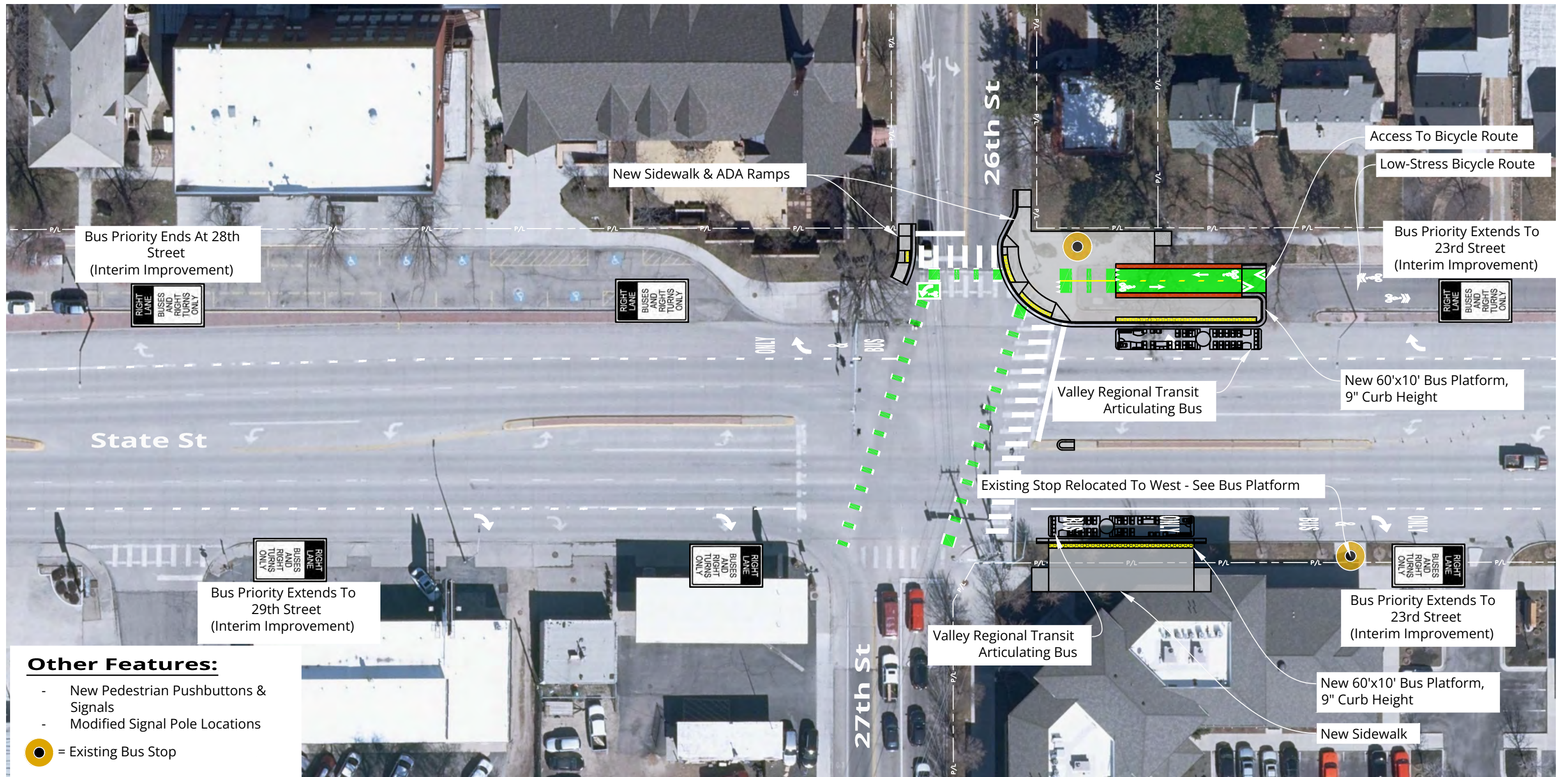
STATE STREET & 26TH/27TH STREET

Description

- » New far side near-level boarding platform for inbound buses
- » New near side near-level boarding platform for outbound buses
- » Right-turn lane, except buses, for both outbound and inbound directions
 - This is an interim improvement until the third vehicle lane on State Street is connected through the corridor
- » Bike lanes moved to multi-use pathways behind outbound stop
- » Bike crossing striping
- » Bulb out on 26th Street for pedestrian/bike crossings
- » New west approach bike crossing
- » Improved connection for pedestrians/bikes to low-stress bike boulevard on State Frontage Road from 23rd to 27th

2035 Multimodal LOS		Safety	
		2035 Crash Reduction (Per Year)	
Pedestrian	Bicycle	Total	Total (% Δ)
C (+1)	D (+1)	2.37	56%



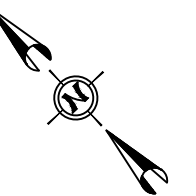


Other Features:

- New Pedestrian Pushbuttons & Signals
- Modified Signal Pole Locations

● = Existing Bus Stop

Scale: 1" = 40'



**State Street Transit Operational Analysis (TOA)
State Street & 26th/27th Street
Proposed In-Bound/Out-Bound Improvements**

Conceptual - Not For Construction.



Proposed Stop Amenities

- » Real-Time Information
- » Premium Shelter Package, including: shelter, bench, lighting, trash can
- » Near-Level Boarding



2035 Transit Travel Time Savings (min)

- » Total All Day (7)
- » AM Peak Period (2)
- » PM Peak Period (1)



Concept-Level Costs (2022 Dollars)

» Design & Other Professional Services	\$74,000
<hr style="border-top: 1px dashed #ccc;"/>	
» Construction	\$342,000
<hr style="border-top: 1px dashed #ccc;"/>	
» Right-of-Way & Utilities	\$73,000
<hr style="border-top: 1px dashed #ccc;"/>	
» Total	\$489,000

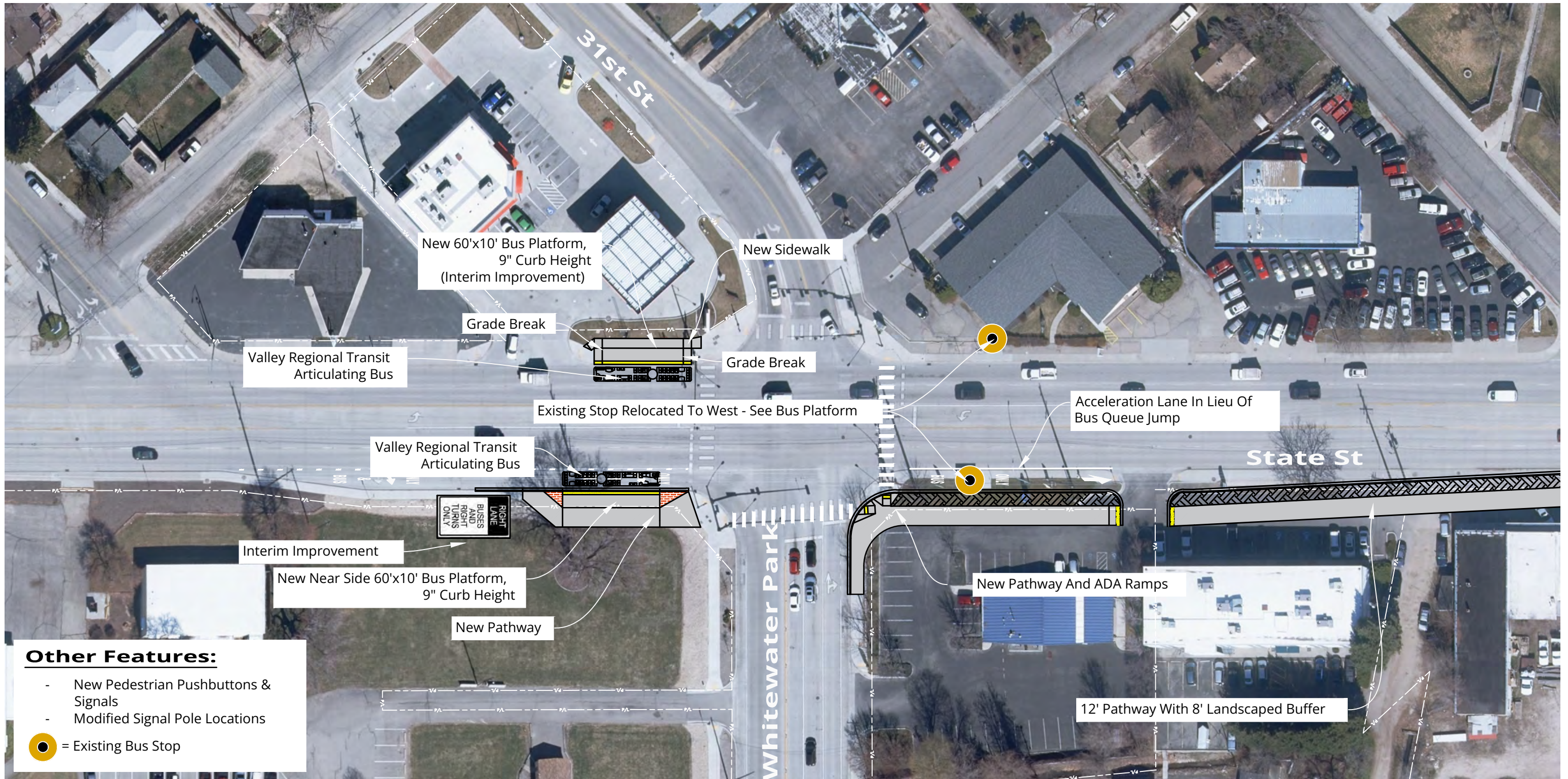
State Street Improvements Operational Analysis Proposed Stop Concept Description

STATE STREET & 31ST STREET/WHITEWATER PARK BLVD.

Description

- » New near side near-level boarding platform for inbound buses
- » New far side near-level boarding platform for outbound buses
 - This is an interim improvement until the third vehicle lane on State Street is connected through the corridor
- » Right-turn lane, except buses, for inbound direction with new bus only acceleration lane on far side of intersection
 - This is an interim improvement until the third vehicle lane on State Street is connected through the corridor



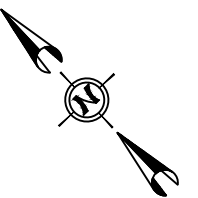


Other Features:

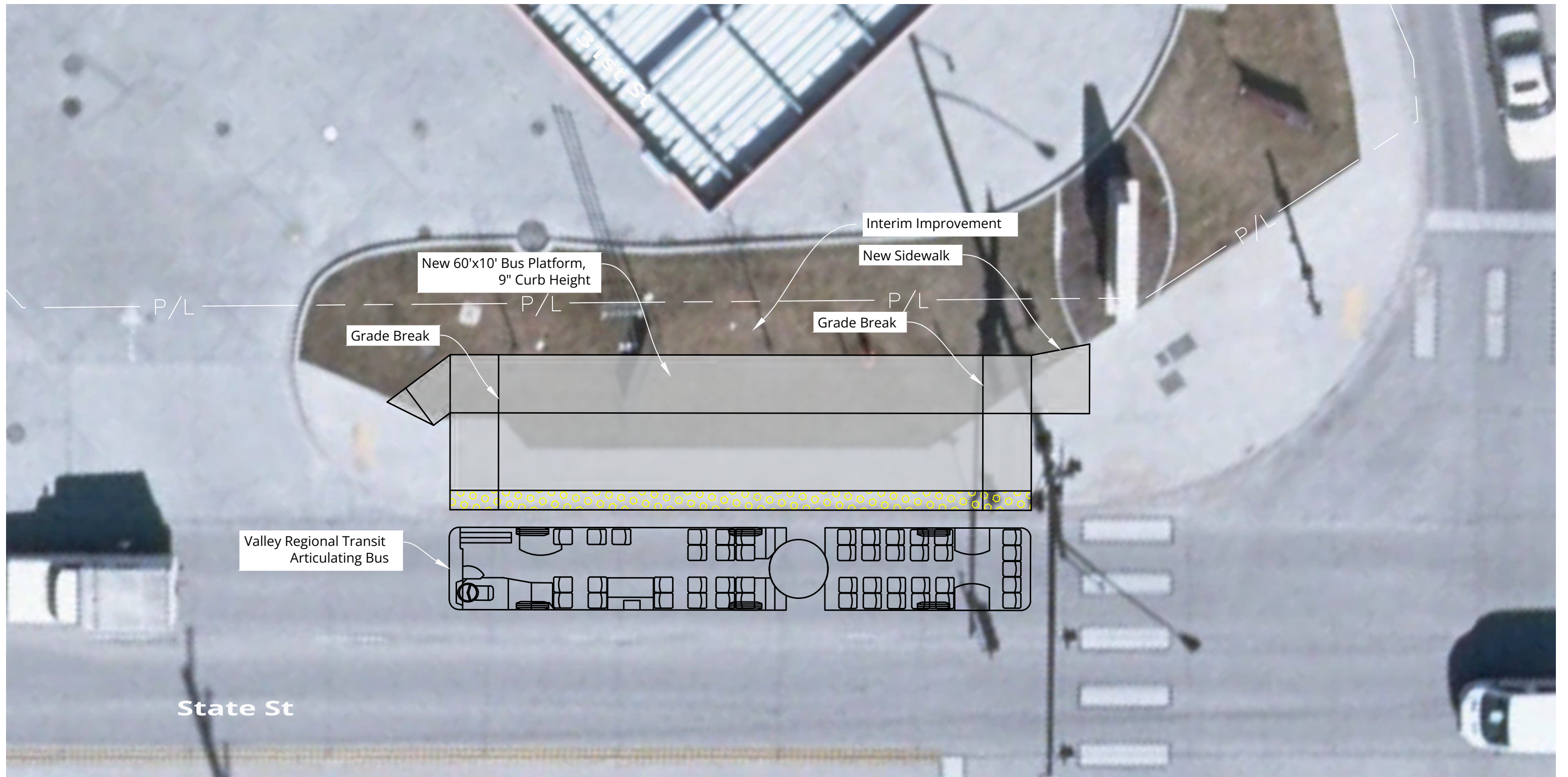
- New Pedestrian Pushbuttons & Signals
- Modified Signal Pole Locations

● = Existing Bus Stop

Scale: 1" = 60'

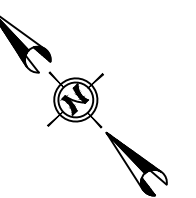


**State Street Transit Operational Analysis (TOA)
State Street & 31st/Whitewater
Proposed In-Bound/Out-Bound Improvements**



State St

Scale: 1" = 10'



**State Street Transit Operational Analysis (TOA)
State Street & 31st/Whitewater (North Side)
Proposed In-Bound/Out-Bound Improvements**

Conceptual - Not For Construction.



Proposed Stop Amenities

- » Real-Time Information
- » Premium Shelter Package, including: shelter, bench, lighting, trash can
- » Off-Board Fare Payment
- » Near-Level Boarding



2035 Transit Travel Time Savings (min)

- » Total All Day (5)
- » AM Peak Period (1)
- » PM Peak Period (2)



Concept-Level Costs (2022 Dollars)

» Design & Other Professional Services	\$64,000
» Construction	\$314,000
» Right-of-Way & Utilities	\$40,000
» Total	\$418,000

State Street Improvements Operational Analysis Proposed Stop Concept Description

STATE STREET & VETERANS MEMORIAL PARKWAY

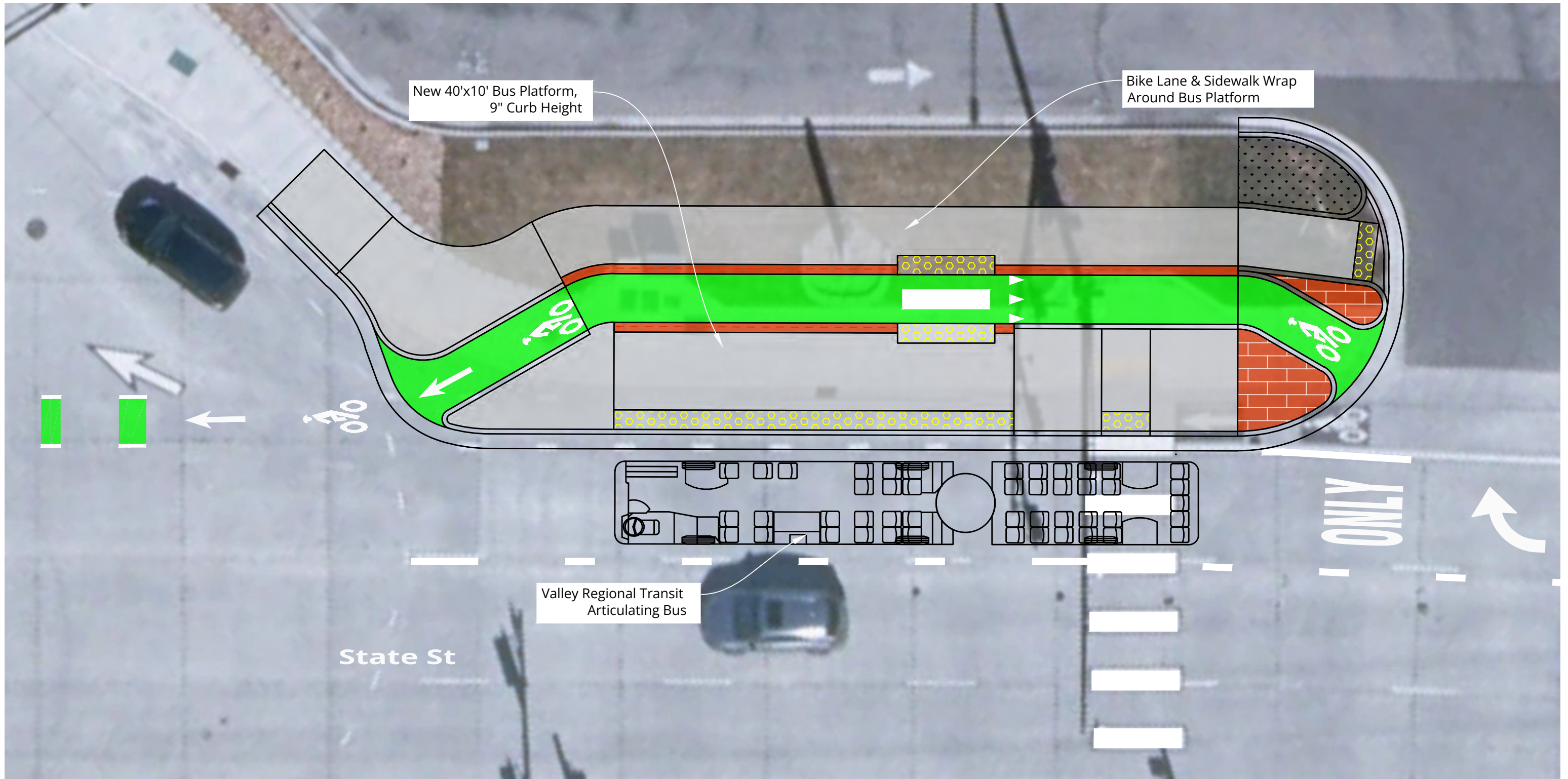
Description

- » New near-level boarding platforms for inbound and outbound buses east of intersection
- » Right-turn lane, except buses, for both outbound and inbound directions near intersection
 - This is an interim improvement until the third vehicle lane on State Street is connected through the corridor
- » Bus-only pockets at intersection to allow future queue jump
 - This is an interim improvement until the third vehicle lane on State Street is connected through the corridor

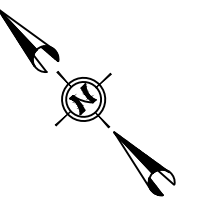




**State Street Transit Operational Analysis (TOA)
State Street & Veterans Memorial Parkway
Proposed In-Bound/Out-Bound Improvements**



Scale: 1" = 10'



**State Street Transit Operational Analysis (TOA)
 State Street & Veterans Memorial Parkway (North Side)
 Proposed In-Bound/Out-Bound Improvements**

Conceptual - Not For Construction.



Proposed Stop Amenities

- » Real-Time Information
- » Premium Shelter Package, including: shelter, bench, lighting, trash can
- » Off-Board Fare Payment
- » Near-Level Boarding



2035 Transit Travel Time Savings (min)

- » Total All Day (6)
- » AM Peak Period (1)
- » PM Peak Period (2)



Concept-Level Costs (2022 Dollars)

» Design & Other Professional Services	\$34,000
» Construction	\$152,000
» Right-of-Way & Utilities	\$28,000
» Total	\$214,000

State Street Improvements Operational Analysis Proposed Stop Concept Description

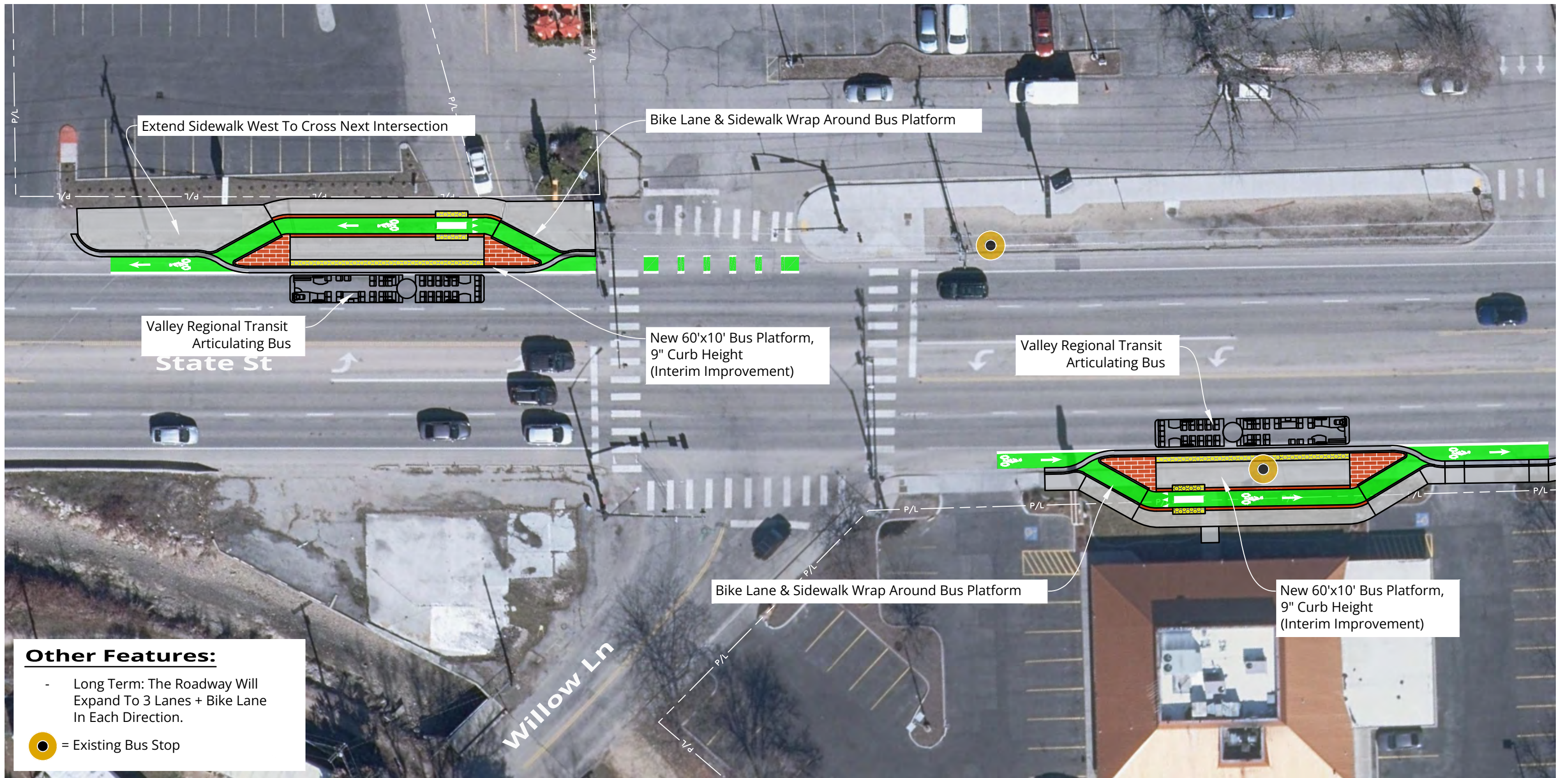
STATE STREET & WILLOW LANE

Description

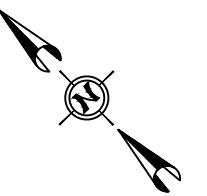
- » New far side near-level boarding platforms for inbound and outbound buses
 - This is an interim improvement until the third vehicle lane on State Street is connected through the corridor
- » Bike lanes and sidewalks moved behind stops
- » Bike crossing striping

2035 Multimodal LOS		Safety	
		2035 Crash Reduction (Per Year)	
Pedestrian	Bicycle	Total	Total (% Δ)
C (+1)	C (+1)	0	0%



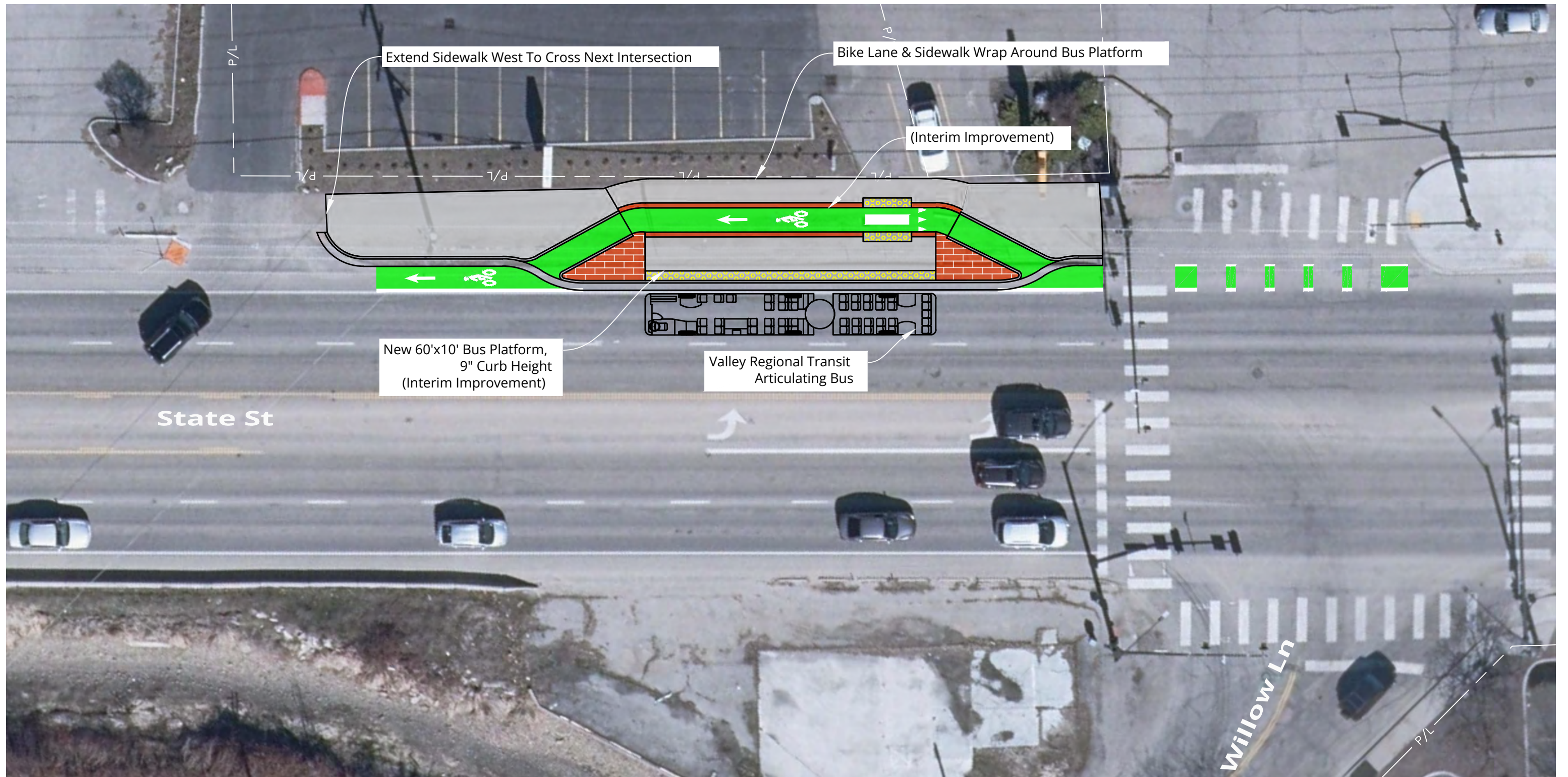


Scale: 1" = 30'

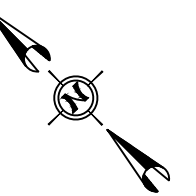


**State Street Transit Operational Analysis (TOA)
State Street & Willow Lane
Proposed In-Bound/Out-Bound Improvements**

Conceptual - Not For Construction.



Scale: 1" = 20'



**State Street Transit Operational Analysis (TOA)
State Street & Willow Lane (North Side)
Proposed In-Bound/Out-Bound Improvements**

Conceptual - Not For Construction.



Proposed Stop Amenities

- » Real-Time Information
- » Premium Shelter Package, including: shelter, bench, lighting, trash can
- » Off-Board Fare Payment
- » Near-Level Boarding



2035 Transit Travel Time Savings (min)

- » Total All Day (10)
- » AM Peak Period (2)
- » PM Peak Period (4)



Concept-Level Costs (2022 Dollars)

» Design & Other Professional Services	\$101,000
» Construction	\$503,000
» Right-of-Way & Utilities	\$185,000
» Total	\$789,000

State Street Improvements Operational Analysis Proposed Stop Concept Description

STATE STREET & COLLISTER DRIVE

Description

- » New far side near-level boarding platforms for inbound and outbound buses
 - Outbound far side platform is an interim improvement dependent on TOD redevelopment and new crosswalk/intersection near Sycamore Drive
- » Right-turn lane, except buses, for both outbound and inbound directions
 - This is an interim improvement until the third vehicle lane on State Street is connected through the corridor
- » Bus-only pockets at intersection to allow future queue jump
 - This is an interim improvement until the third vehicle lane on State Street is connected through the corridor
- » Bike lane and sidewalk moved behind outbound stop
- » Bike crossing striping
- » New multi-use path with landscaping buffer provided on south side of intersection from Marketplace pathway to end of improvements, pathway behind stop

2035 Multimodal LOS		Safety	
		2035 Crash Reduction (Per Year)	
Pedestrian	Bicycle	Total	Total (% Δ)
C (+1)	B (+1)	3.65	65%





Conceptual - Not For Construction.



Proposed Stop Amenities

- » Real-Time Information
- » Premium Shelter Package
- » Near-Level Boarding



2035 Transit Travel Time Savings (min)

- » Total All Day (12)
- » AM Peak Period (2)
- » PM Peak Period (4)



Concept-Level Costs (2022 Dollars)

» Design & Other Professional Services	\$223,000
» Construction	\$1,159,000
» Right-of-Way & Utilities	\$343,000
» Total	\$1,725,000

State Street Improvements Operational Analysis Proposed Stop Concept Description

STATE STREET & MARKETPLACE LANE

Description

- » New far side near-level boarding platforms for inbound and outbound buses
- » Right-turn lane, except buses, for both outbound and inbound directions
 - This is an interim improvement until the third vehicle lane on State Street is connected through the corridor
- » Northbound free right turn lane and island removed, new pedestrian ramps to shorten crossing distance
- » Bike lane and sidewalk moved behind outbound stop
- » Bike crossing striping
- » New multi-use path with landscaping buffer provided on south side of intersection from Bloom St/ Plantation River Dr to Collister pathway, pathway behind stop

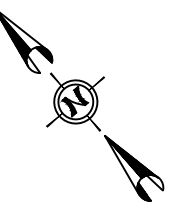
2035 Multimodal LOS		Safety	
		2035 Crash Reduction (Per Year)	
Pedestrian	Bicycle	Total	Total (% Δ)
D	C (+3)	1.15	65%





See Sheet 2

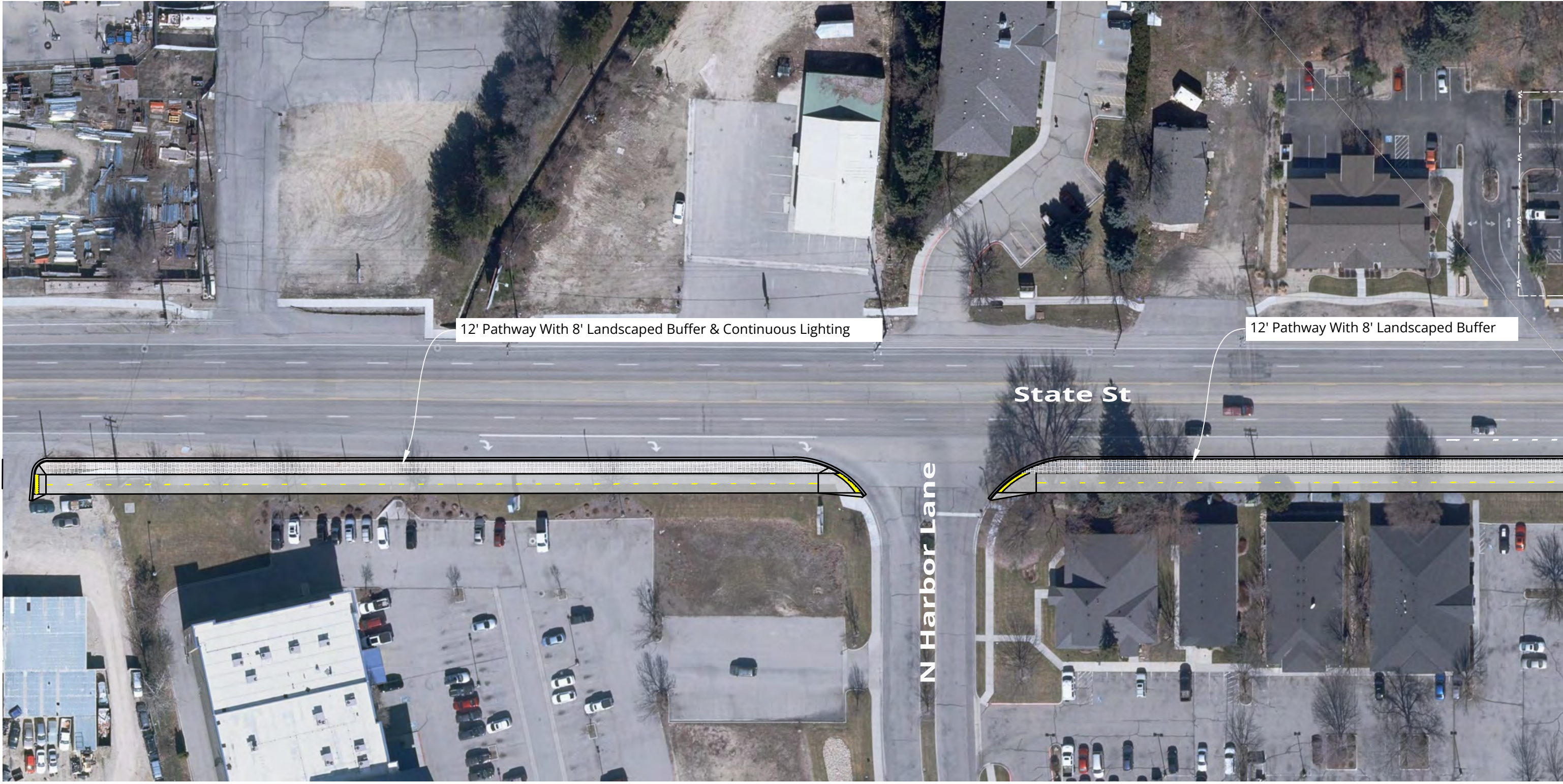
Scale: 1" = 60'



**State Street Transit Operational Analysis (TOA)
State Street & Marketplace Sheet 1
Proposed In-Bound/Out-Bound Improvements**

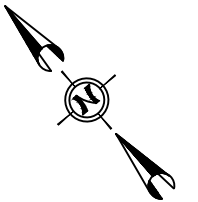
Conceptual - Not For Construction.

See Sheet 1



See Sheet 3

Scale: 1" = 60'

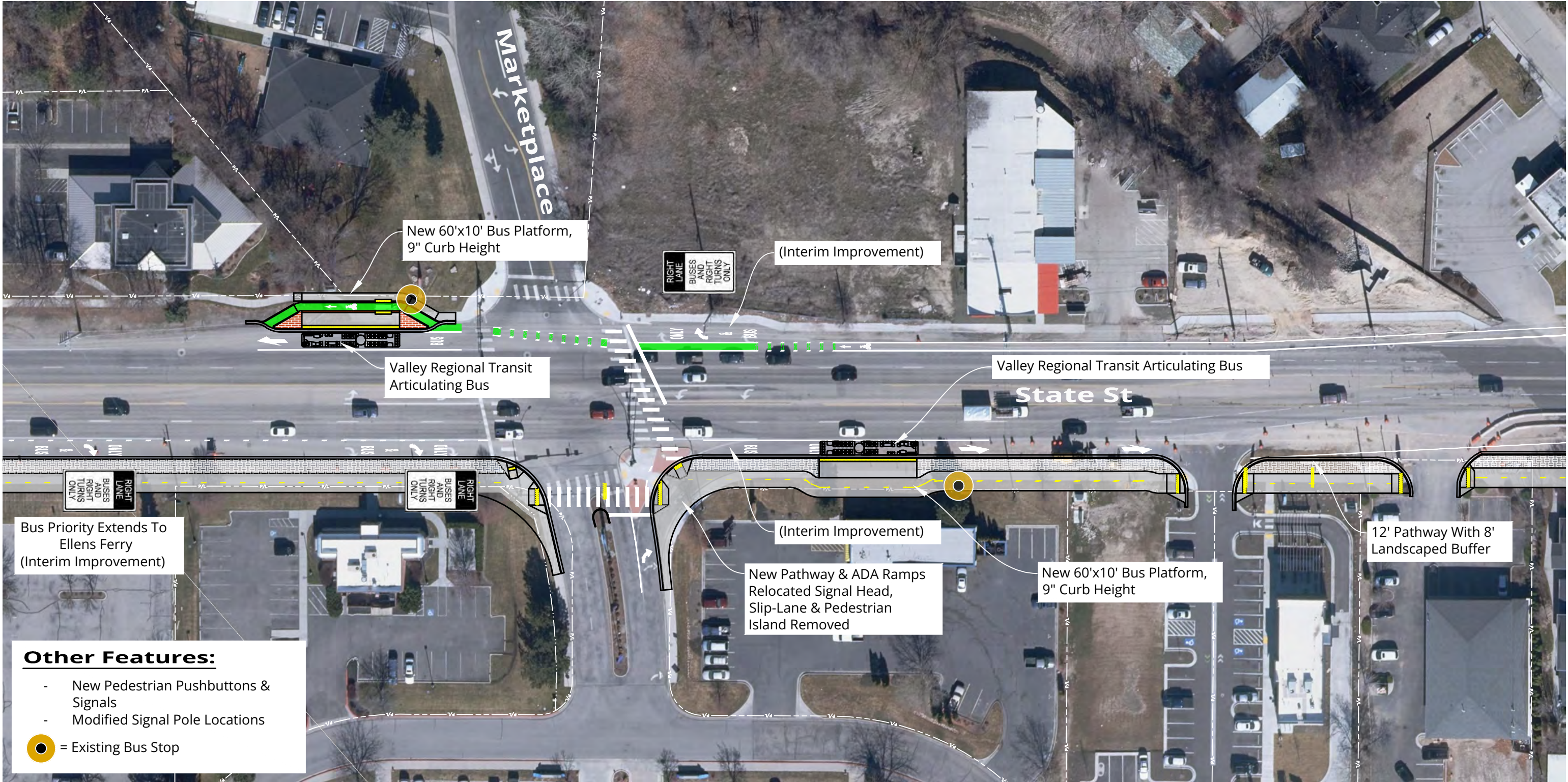


**State Street Transit Operational Analysis (TOA)
 State Street & Marketplace Sheet 2
 Proposed In-Bound/Out-Bound Improvements**

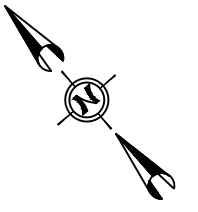
Conceptual - Not For Construction.

See Sheet 2

See Sheet 4



Scale: 1" = 60'



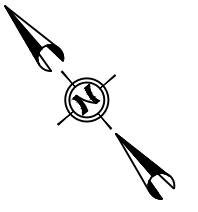
**State Street Transit Operational Analysis (TOA)
State Street & Marketplace Sheet 3
Proposed In-Bound/Out-Bound Improvements**

Conceptual - Not For Construction.

See Sheet 3



Scale: 1" = 60'



**State Street Transit Operational Analysis (TOA)
 State Street & Marketplace Sheet 4
 Proposed In-Bound/Out-Bound Improvements**

Conceptual - Not For Construction.



Proposed Stop Amenities

- » Real-Time Information
- » Premium Shelter Package, including: shelter, bench, lighting, trash can
- » Off-Board Fare Payment
- » Near-Level Boarding



2035 Transit Travel Time Savings (min)

- » Total All Day (5)
- » AM Peak Period (1)
- » PM Peak Period (2)



Concept-Level Costs (2022 Dollars)

» Design & Other Professional Services	\$31,000
» Construction	\$188,000
» Right-of-Way & Utilities	\$24,000
» Total	\$243,000

State Street Improvements Operational Analysis Proposed Stop Concept Description

STATE STREET & GLENWOOD STREET

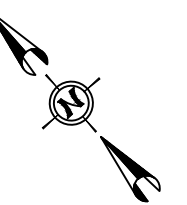
Description

- » Consolidate outbound stops to Gary Lane and improve stop
- » Right-turn lane, except buses, for both outbound and inbound directions
 - This is an interim improvement until the third vehicle lane on State Street is connected through the corridor
- » Bus-only pocket at intersection to allow inbound bus queue jump
 - This is an interim improvement until the third vehicle lane on State Street is connected through the corridor
- » New pedestrian Z-crossing and ADA ramps east of intersection





Scale: 1" = 150'



**State Street Transit Operational Analysis (TOA)
State Street & Glenwood Street
Proposed In-Bound/Out-Bound Improvements**



Proposed Stop Amenities

- » Real-Time Information
- » Premium Shelter Package, including: shelter, bench, lighting, trash can
- » Near-Level Boarding



2035 Transit Travel Time Savings (min)

- » Total All Day (2)
- » AM Peak Period (1)
- » PM Peak Period (1)



Concept-Level Costs (2022 Dollars)

» Design & Other Professional Services	\$229,000
» Construction	\$1,102,000
» Right-of-Way & Utilities	\$170,000
» Total	\$1,501,000

State Street Improvements Operational Analysis Proposed Stop Concept Description

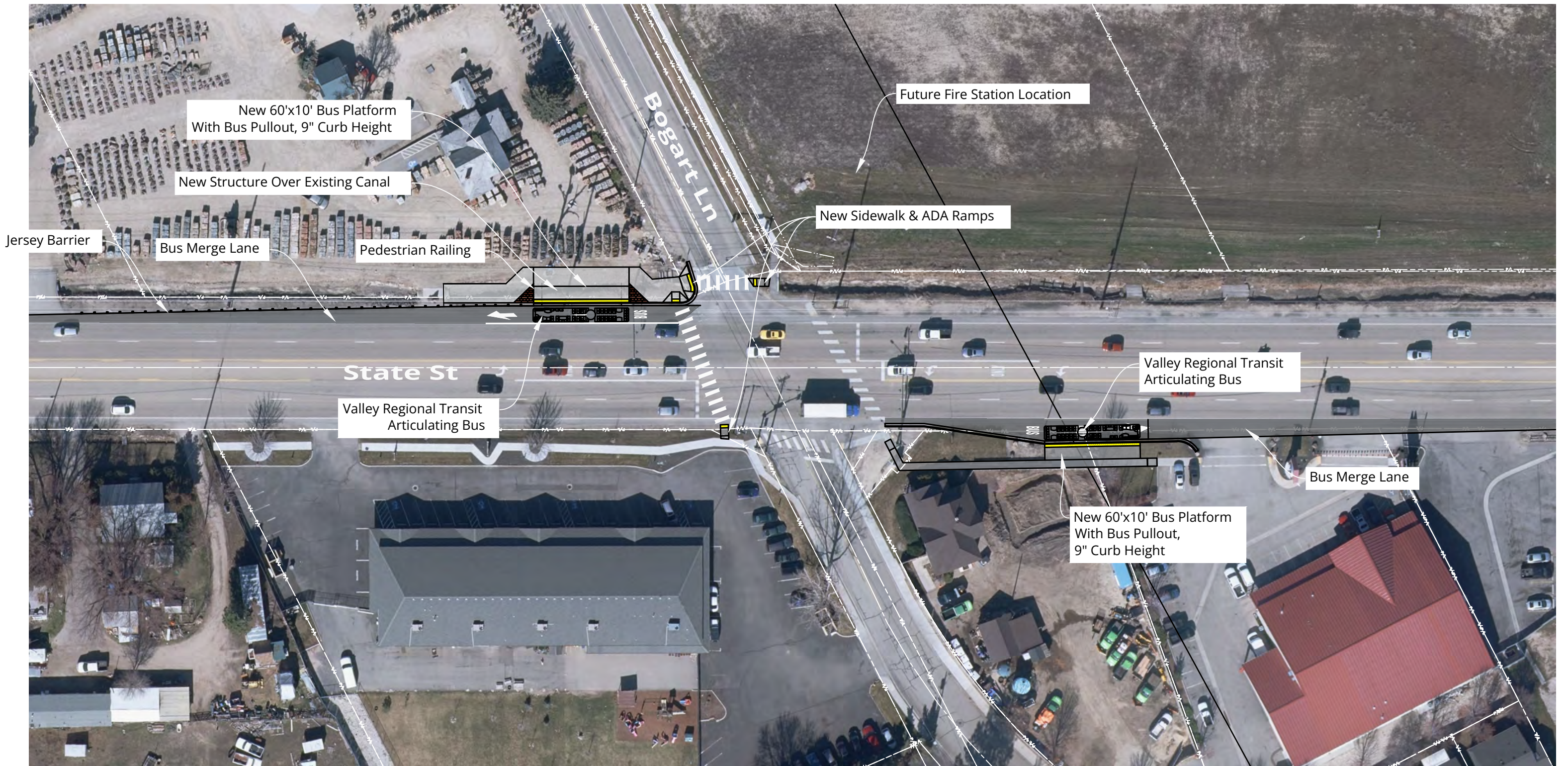
STATE STREET & BOGART LANE

Description

- » New far side near-level boarding platforms for inbound and outbound buses
- » Pullouts and acceleration tapers for both stops
- » Sidewalks moved behind stops and pathway shown behind outbound stop
- » New structure over canal for outbound bus platform

2035 Multimodal LOS		Safety	
		2035 Crash Reduction (Per Year)	
Pedestrian	Bicycle	Total	Total (% Δ)
C (+1)	D (+1)	2.7	56%





New 60'x10' Bus Platform
With Bus Pullout, 9" Curb Height

New Structure Over Existing Canal

Jersey Barrier

Bus Merge Lane

Pedestrian Railing

Future Fire Station Location

New Sidewalk & ADA Ramps

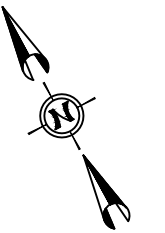
Valley Regional Transit
Articulating Bus

Valley Regional Transit
Articulating Bus

Bus Merge Lane

New 60'x10' Bus Platform
With Bus Pullout,
9" Curb Height

Scale: 1" = 60'



**State Street Transit Operational Analysis (TOA)
State Street & Bogart Lane
Proposed In-Bound/Out-Bound Improvements**

Conceptual - Not For Construction.